

A panoramic view of a city skyline at dusk or night. The sky is a mix of blue and purple, with some clouds. The city lights are visible, including a prominent green skyscraper on the left and a large stadium-like structure on the right. The foreground shows a dense urban area with many smaller buildings and streetlights.

Catalog & Company information Nikki Tsusho Corporation. from Japan

<https://www.nikki-tsusho.co.jp/>

 日輝通商株式会社
IKKI

Catalog of recycled plastic materials for Export

1、 Materials comply with the Basel law



PE film



PE roll



PP band



Crushed PP



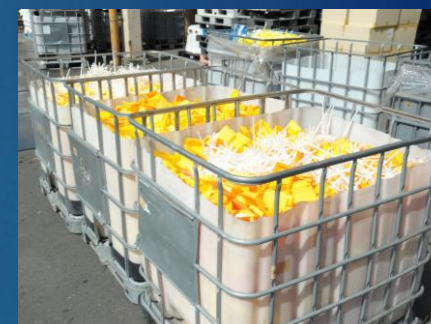
PET roll



PET film



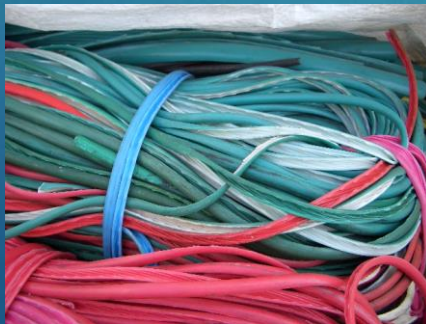
Dumpling material



Deficient molding products



Styrofoam



Coated wire



Non-woven fabric



PVC pipe

Catalog of recycled plastic materials for Export

2、 Materials regulated by Basel law



Crushed plastic bottles



Powder PET



Damaged JUMBO BAGS for recycle①



Damaged JUMBO BAGS for recycle②



Soft mix



Hard mix



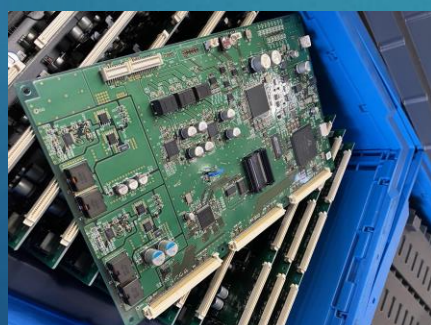
Agricultural vinyl



Fishing net



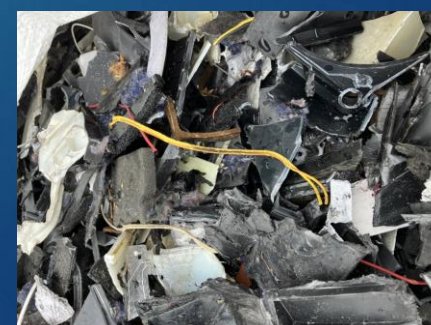
Game console parts ①



Game console parts ②



Game console parts ③



Crushed small appliances

Catalog of recycled plastic materials for Export

3、 Other products we handled



PP recycled pellets (Made in Japan)



PET virgin & recycle (Made in Taiwan)



Brand new JUNBO BAG (Made in China)



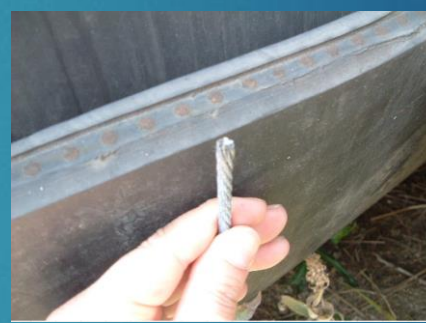
Used Bulk container



Used Textile belts ①



Used Textile belts ②



Used Steel belts ①



Used Steel belts ②



Powdered milk



Paper diaper



Cosmetics



Beverage (Soft & alcoholic)

Our factory equipment and manufacturing capacity



Employee



Horizontal compressor



Pallet crusher



Crusher



Uniaxial crusher



Twin screw extruder



Kneading Extruder



Molding machine



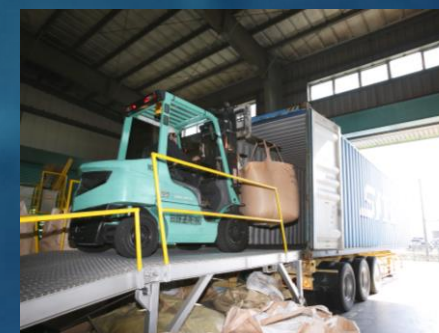
Tumbler



Component analyzer



Pelletizing



Vanning

Material recycle flow



Plastic products

Foreign recycling company



Export from Japan



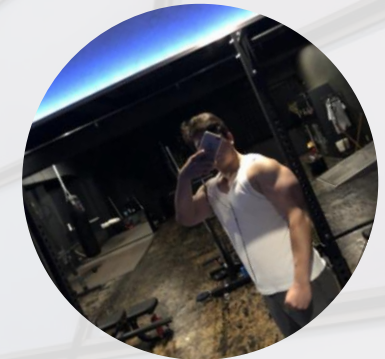
Used Plastic






Nikki Tsusho Corporation


Compression Molding Pelletizing



About our sales team



Name	Dinh	Wang	Zaw	Kayo	Kaz
Position	Chief	Member	Member	Member	Member
Origin	 (Vietnam)	 (China)	 (Myanmar)	 (Japan)	 (Japan)
Self introduction	<p>Hello everyone. Leave it to us if you have a business related to Vietnam.</p> <p>I love to playing Golf. I would be happy if I could interact with people all over the world through business and Golf.</p>	<p>I'm in charge of sales for China. I like to playing Badminton.</p> <p>My favorite saying is the following maxim, Either move or be moved. -Ezra Weston Loomis Pound, Italian poet of the early 20th century.-</p>	<p>Hello everyone, nice to meet you. I'm working at Nagoya branch office now.</p> <p>My hobby is playing football, cycling, motorcycle riding, and playing chinlone.</p> <p>Thank you.</p>	<p>I'm mainly in charge of preparing shipping documents.</p> <p>My hobby is traveling over the world.</p> <p>My favorite saying is, Luck favors the prepared.</p>	<p>Hello everyone, I'm working at headquarters. My hobby is Video Game, PlayStation, Steam, and Mahjong.</p> <p>I would be happy if we could contribute to the development of the world through our business.</p>
Language	Vietnamese English Japanese	Chinese Japanese	Burmese English Japanese	Japanese English French	Japanese English

Company overview



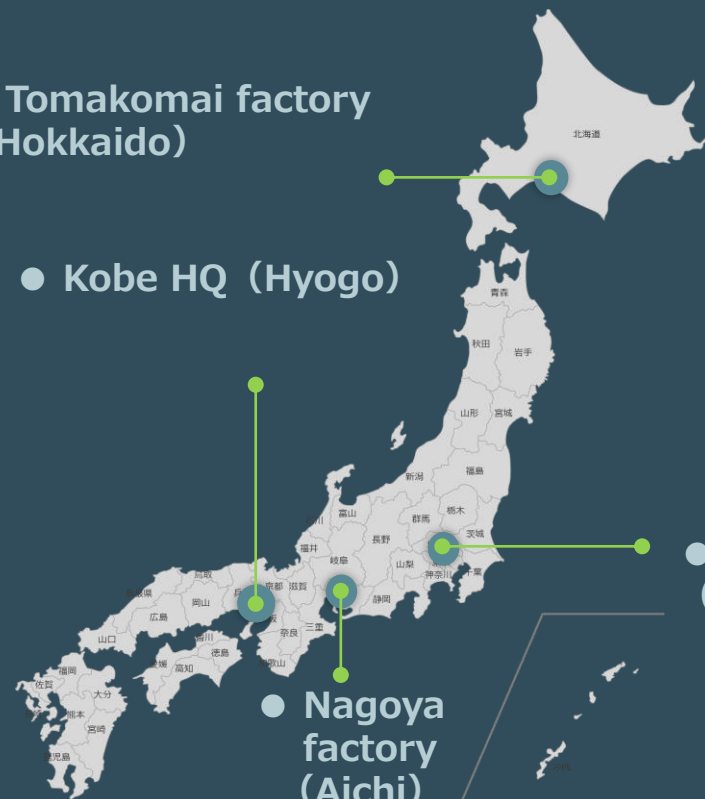
- ▶ Name Nikki Tsusho Corporation.
- ▶ HQ location 2-2-3, KAIGANDORI, CHUO-KU, KOBE, 650-0024, JAPAN
- ▶ Established September, 2004
- ▶ Capital stock ¥ 10,000,000 Japanese Yen
- ▶ CEO Yuichi Nagafuchi 
- ▶ Business content Processing, molding and sales of plastic raw materials
Trade support business
- ▶ Factory Tomakomai factory (Tomakomai, Hokkaido)
Location Ota factory (Ota, Gunma)
Nagoya factory (Asuka village, Aichi)
- ▶ Contact us  [n100japan@gmail.com]
 [TEL: +81-78-326-7081] Reception hours: Monday~Friday 9:00~17:00
(Japan time zone)
 [https://www.nikki-tsusho.co.jp/]

● Tomakomai factory (Hokkaido)

● Kobe HQ (Hyogo)

● Ota factory (Gunma)

● Nagoya factory (Aichi)



Kobe Headquarters



Tomakomai factory



Ota factory



Nagoya factory